

**Location**

Menesetung Room  
11:00 am

**Attendees**

Trevor Bazinet	Janice Hallahan, CAO	Vicky Culbert - BIA Appointment
Randy Carroll	Sean Thomas, Director of Community Services, Infrastructure and Operations	Christopher Spaleta – Citizen Appointment
	Andrea Fisher, Director of Legislative Services/Clerk	Colin Carmichael - Huron Chamber of Commerce Appointment
Dennis Elliott	Jennifer Hachler	
Dale Erb	Rita Huang	

Absent: Allison Segeren, Town Councillor

**Brief Agenda Items**

1. Mayor Bazinet opens the meeting.
2. Approval of Agenda

Moved by: Member Culbert  
Seconded by: Member Carmichael

That the October 10, 2024 agenda be approved as circulated.

CARRIED

3. Adoption of Minutes

Moved by: Councillor Carroll  
Seconded by: Member Culbert

That the August 23, 2024 minutes be approved as printed.

CARRIED

4. Mayor Bazinet reviews the motions passed at the Special Council Meeting that was held on September 4<sup>th</sup>:
  - i. That the Travel lanes of the Downtown Core be two lanes, at 4 metres each for traffic, including pavement delineation.
  - ii. That the Intersection Design be a common intersection configuration to include mountable island, twin crosswalks to interior, and opportunity for plantings, to include two tree plantings in the bump-out;
  - iii. That Bump-outs be included in the final detail design at intersections to reduce distance, protect pedestrians, and provides opportunity for landscaping.
  - iv. That Planters be of equal distribution of three (3) raised hybrid design planters, to be determined at a later date once some design options are brought back for consideration.
  - v. That Parking in the Downtown Core be angle parking with a standard width of +/- 2.75 metres (12 stalls for 8 blocks), with immediate off-square parking as 90 degree parking.
  - vi. That Accessible Parking be Type A accessible parking spaces, 1 to 2 stalls located on each connecting street (immediately adjacent to the Square), with other areas to be considered in conjunction with the final design.
  - vii. That there be no reverse angle parking in the Downtown Core.
  - viii. That Council direct staff to develop criteria to identify preferred qualified contractors for the Downtown reconstruction project and direct staff to present a list of preferred prequalified contractors to Council for their consideration.

Attention was drawn to the full presentation made by BMROSS and GSP: <https://pub-goderich.escribemeetings.com/filestream.ashx?DocumentId=42554>  
Additional Goderich Town Council information, meeting minutes, agendas and reports can be found on the Town of Goderich website at [www.goderich.ca](http://www.goderich.ca).

5. Dale, Dennis, and Jennifer provide a design update including discussion around the following elements:
  - General Layout and fine tuning of curb lines, planter size, etc.
  - Cross-Section and Grading work – constraints and opportunities
  - Street Lighting palette
  - Street Furnishings palette
  - Utility liaison
  - Wayfinding
  - Considerations for tendering – prequalified, etc.
6. Dale led a discussion around street lighting and the options related to luminaires and fixtures as presented in Appendix A (refer to meeting agenda). Dale described the dual zone lighting approach being recommended for the project and reviewed the options related to banner arms, planter arms, and receptacles on the poles.

Following discussion;

Moved by: Vicky Culbert

Seconded by: Chris Spaleta

That the Task Force recommend the installation of the luminaire K828 (roadway lighting) and the K728 (pedestrian lighting) Moderne.

CARRIED

7. Dale and Jennifer led a discussion related to Street Furnishings and the information provided in Appendix B (refer to meeting agenda) related to options. It was agreed that a decision would be deferred related to preferences to allow the BIA time to comment. It was confirmed that the existing memorial benches would be reinstalled as part of the project work.
8. There was a discussion related to Wayfinding and the information provided in Appendix C of the meeting agenda. Sean noted that options are being reviewed to minimize advertising signs.
9. The following members of the public as well as member of the Task Force were provided opportunity to speak:
  - John Thompson
    - John suggested that there is a conflict with the November meetings of the BIA and Council. The BIA will need to consider revising their date.
  - Glenn Scheels
    - Selected luminaires are appropriate.
    - Suggested consideration be given to hanging lights across intersections at cardinal streets.
    - Suggested that wood seating instead of metal should be preferred.
    - Likes the idea of hoop type bike racks.
    - Noted that additional bike storage should be considered for the interior of the Square.
    - The Town should consider lighting around the interior as now may be the opportune time to change.
    - The Town should consider standardizing patio enclosures and finishes. This could be completed through a separate process.
  - Colin Carmichael
    - Colin suggested that consideration be given to “future-proofing” where possible including infrastructure such as ductwork for EV charging stations, etc.

10. Date for next meeting was set for **Wednesday, November 13<sup>th</sup> at 1:00pm.**

11. Adjournment

Moved by: Member Culbert

Seconded by: Councillor Carroll

That the Rebuilding Downtown Infrastructure Task Force does now adjourn at 12:11 pm.

CARRIED

Meeting Minutes prepared by D. Erb  
Circulation to all invited Attendees

Encl.  
Meeting Agenda Appendices Information, October 8, 2024

**MEETING AGENDA APPENDICES INFORMATION**

October 8, 2024

# **APPENDIX A LIGHTING**

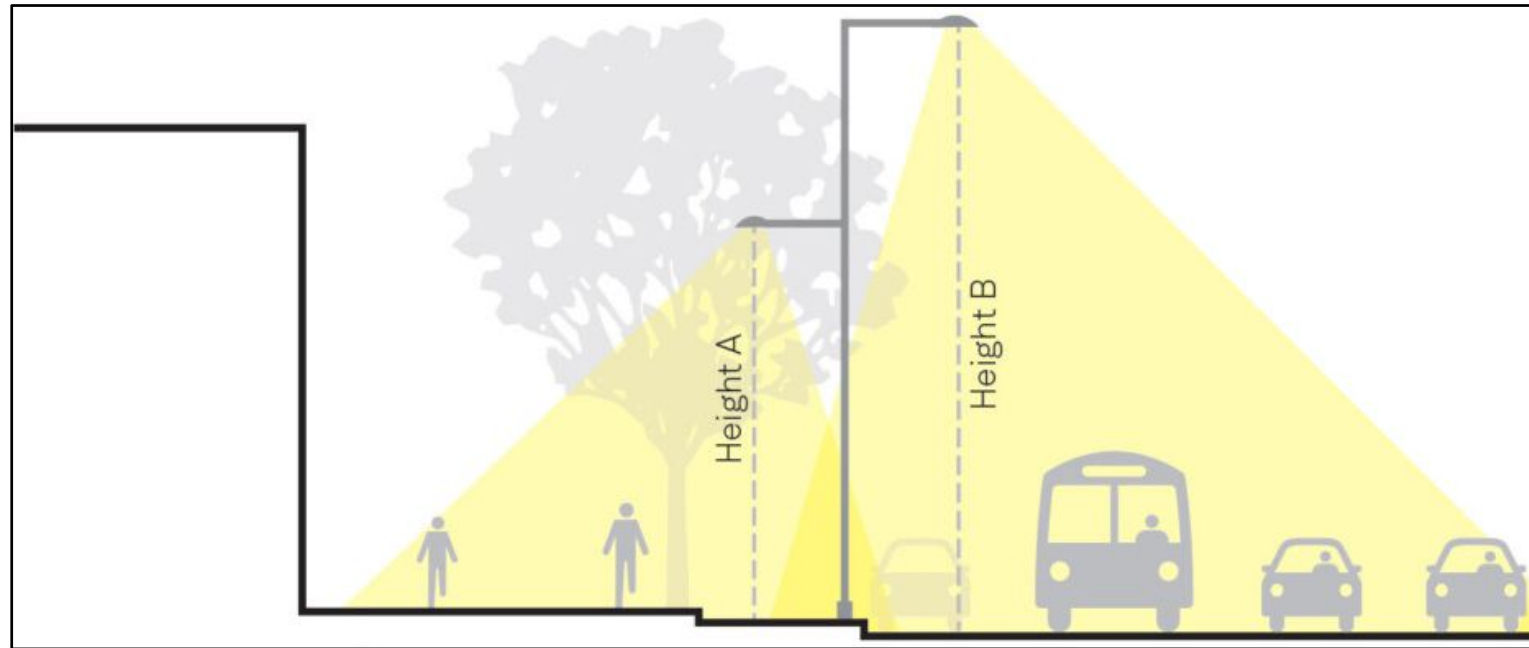
# STREET LIGHT CONFIGURATION AND LIGHTING OPTIONS

SEPTEMBER 2024

## CONFIGURATION

- **Dual Lighting Zones Proposed**

- Both street and pedestrian illumination
- Will provide benefit as trees mature

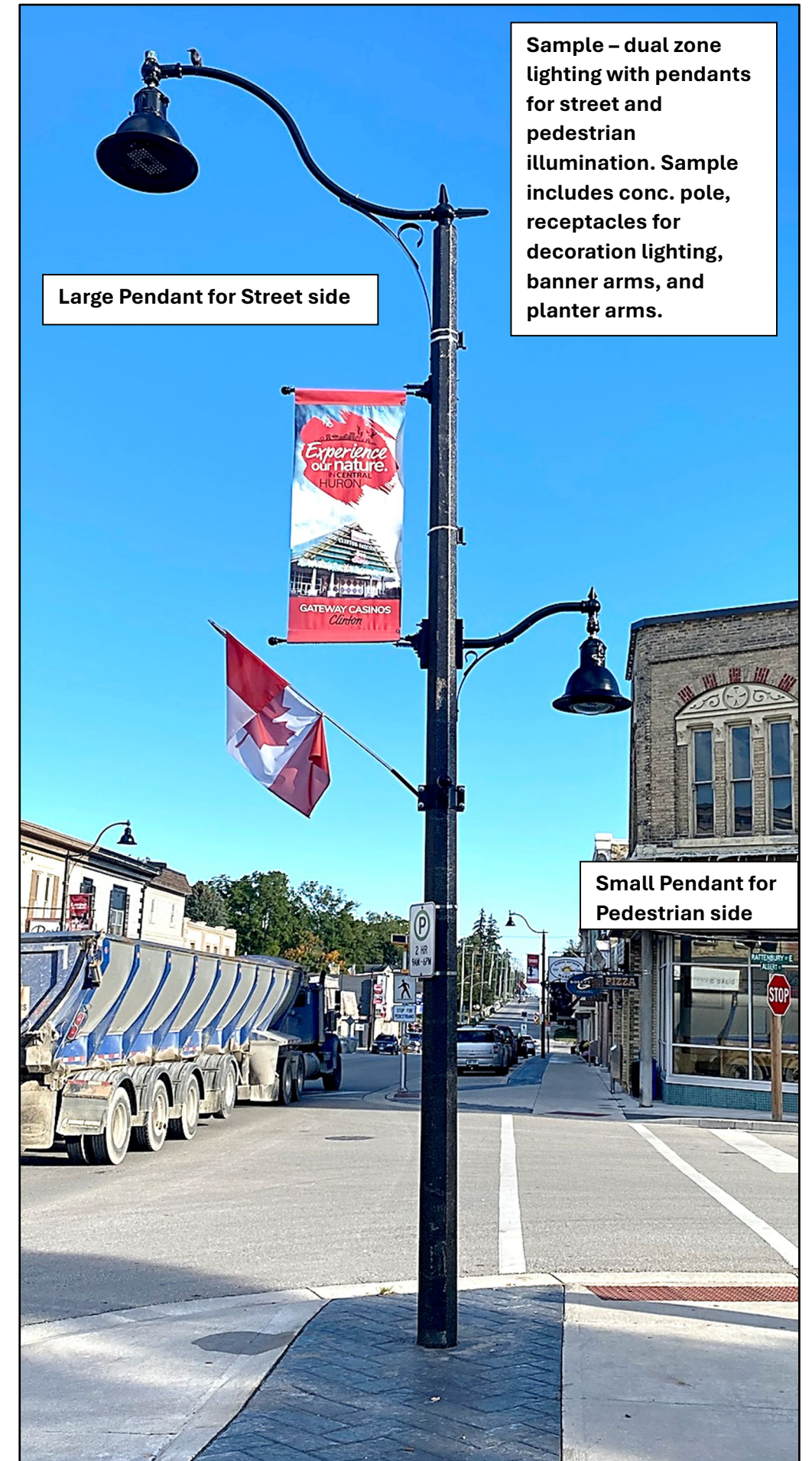


- **Dark Sky Compliance**

- Existing Luminaires are not compliant – Town has Dark Sky By-Law
- Useful: clear purpose - The right light, in the right place
- Targeted and Controlled
- Professionally designed and modelled to meet municipal standards
- Colour – warm white



<p>1 Light only what you need</p>	<p>2 Use energy efficient bulbs and only as bright as you need</p>	<p>3 Shield lights and direct them down</p>
<p>4 Only use light when you need it</p>	<p>5 Chose warm white light bulbs</p>	<p>6 Don't light your neighbours' property</p>



Large Pendant for Street side

Sample – dual zone lighting with pendants for street and pedestrian illumination. Sample includes conc. pole, receptacles for decoration lighting, banner arms, and planter arms.

Small Pendant for Pedestrian side

# STREET LIGHT CONFIGURATION AND LIGHTING OPTIONS

SEPTEMBER 2024

## POLES

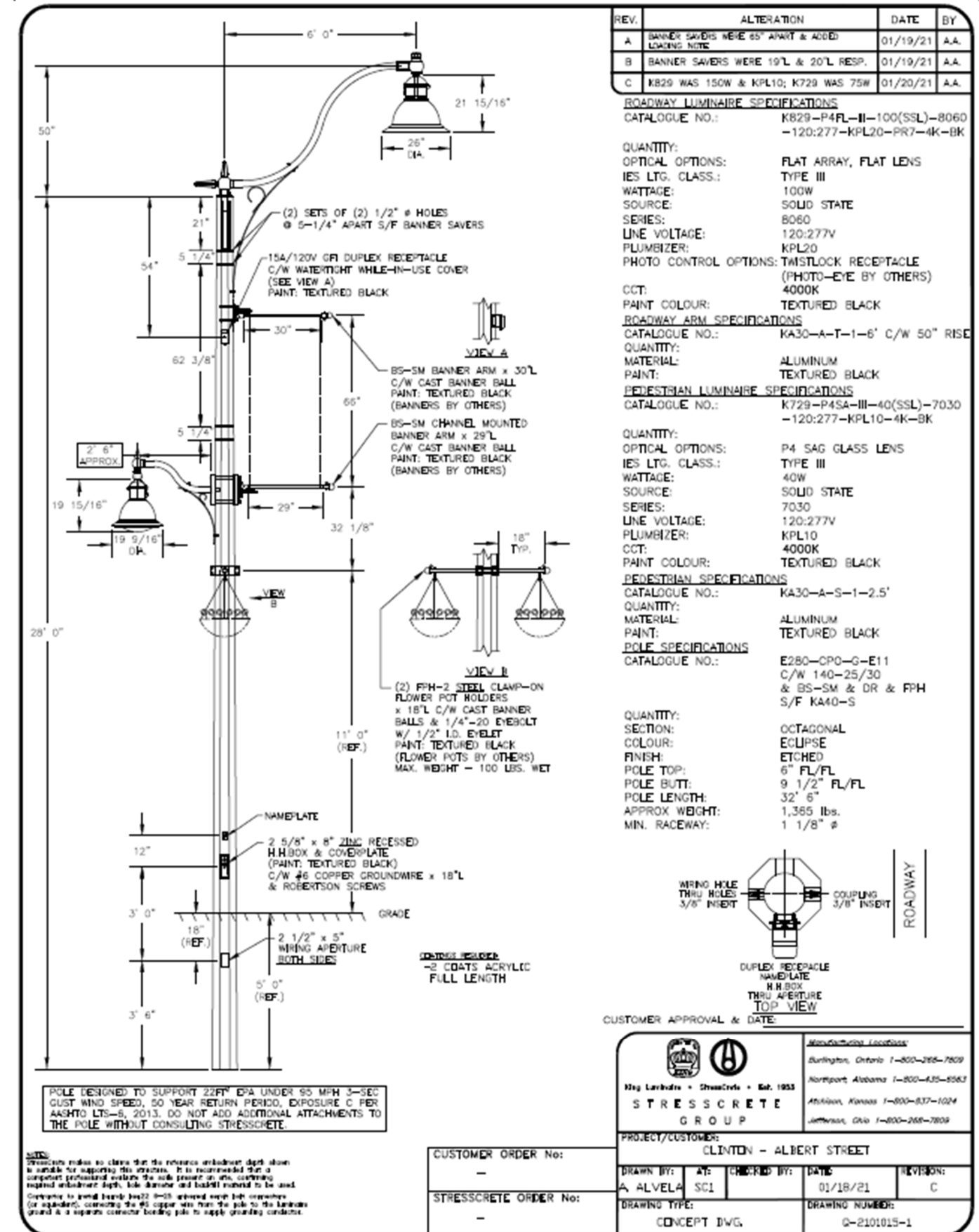
The current poles in Goderich, which are experiencing corrosion, were manufactured in the 90s. However, significant advancements have been made in concrete pole manufacturing since then, improving their resilience in high-salt environments. Below are some of the improvements that have been made since the 90's:

- Enhanced Concrete Mix Design** – Modern poles now use advanced admixtures, reducing water content and increasing chemical durability, which makes them more resistant to salt intrusion and internal steel reinforcement corrosion.
- Galvanized and Epoxy-Coated Reinforcement** – Reinforcement steel is now typically galvanized or epoxy-coated, providing extra protection against corrosion caused by salt.
- Improved Manufacturing Techniques** – Advances in curing processes and the use of denser concrete have made modern poles less porous and more resistant to environmental factors, including salt from de-icing.

These improvements result in pole's that are much more durable and better suited for environments with high salt exposure.

## DESIRED POLE ADD-ONS

- Banner Arms?
- Planter Arms?
- Receptacles?
- Charging Ports?





**STREET LIGHT CONFIGURATION AND LIGHTING OPTIONS**

SEPTEMBER 2024

**FIXTURES AND LUMINAIRES**

**K828 / K728 MODERNE SR/JR**

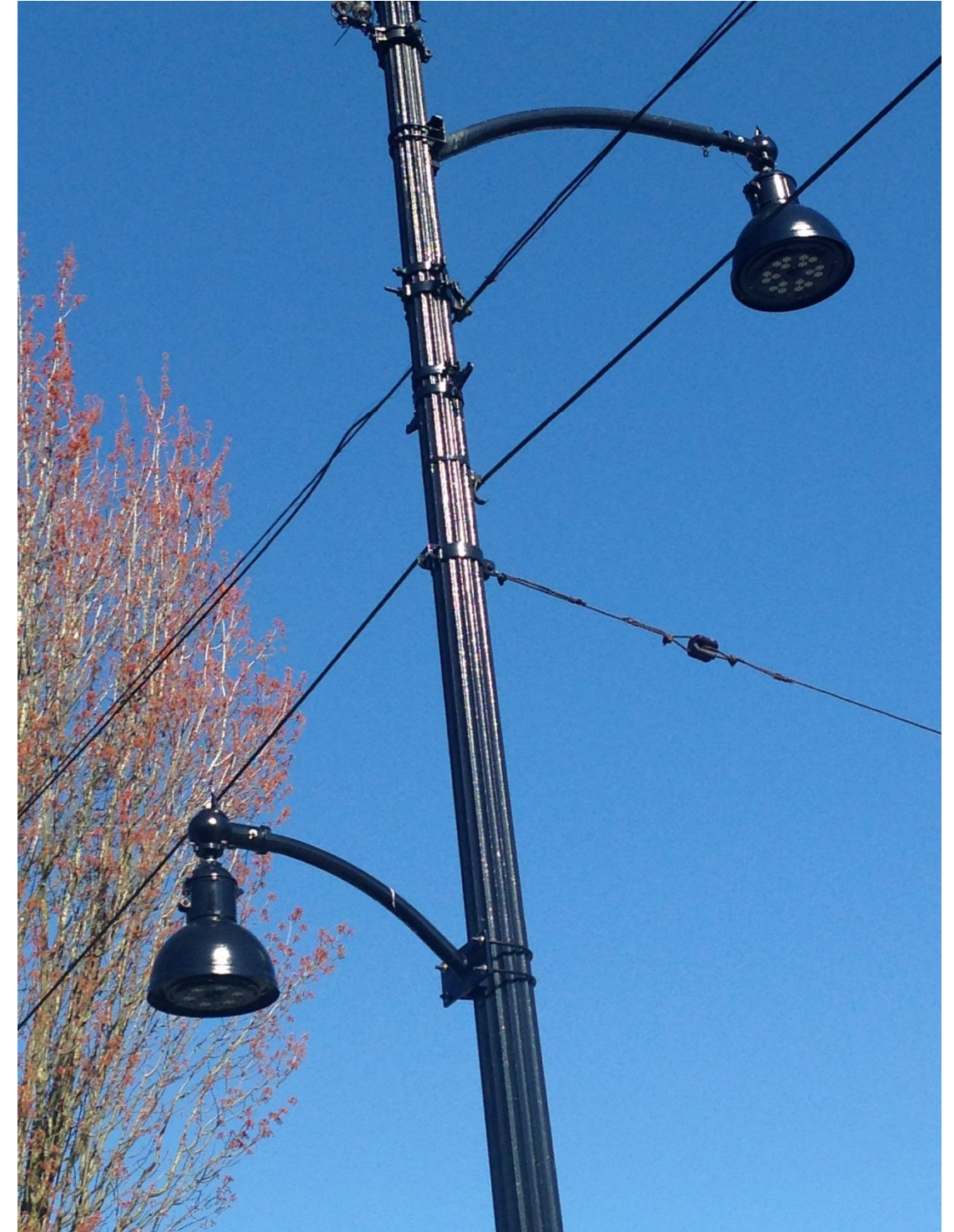


# STREET LIGHT CONFIGURATION AND LIGHTING OPTIONS

SEPTEMBER 2024

## FIXTURES AND LUMINAIRES

K809 / K709 WILFSHIRE SR/JR



# STREET LIGHT CONFIGURATION AND LIGHTING OPTIONS

SEPTEMBER 2024

## FIXTURES AND LUMINAIRES

### K601D COACH LANTERN



**APPENDIX B**  
**STREET FURNISHINGS**

SITE FURNISHING PALETTE - OPTION A - DESIGN TEAM PREFERRED



Back Rest Only - Parallel 42



OR



Planter Bench Top - Generation 50



Backed Bench - Generation 50



Backless Bench - Generation 50



Waste/Recycle - Generation 50 (120 L each)



Bike Racks - BRWA - 101



Existing Self Watering Planters

SITE FURNISHING PALETTE - OPTION B



Back Rest Only - Parallel 42



Backed Bench - Plainwell



Backless Bench - Gretchen



Waste/Recycle - Sage (170 L each)



Bike Rack - BRBS



Existing Self Watering Planters

SITE FURNISHING PALETTE - OPTION C



Back Rest Only - Custom

OR



Planter Bench Top - 870 Backed



Backed - 870



Backless - 870



Waste/Recycle - 600 Series (120 L each)



Bike Rack - 1600 Series - SC

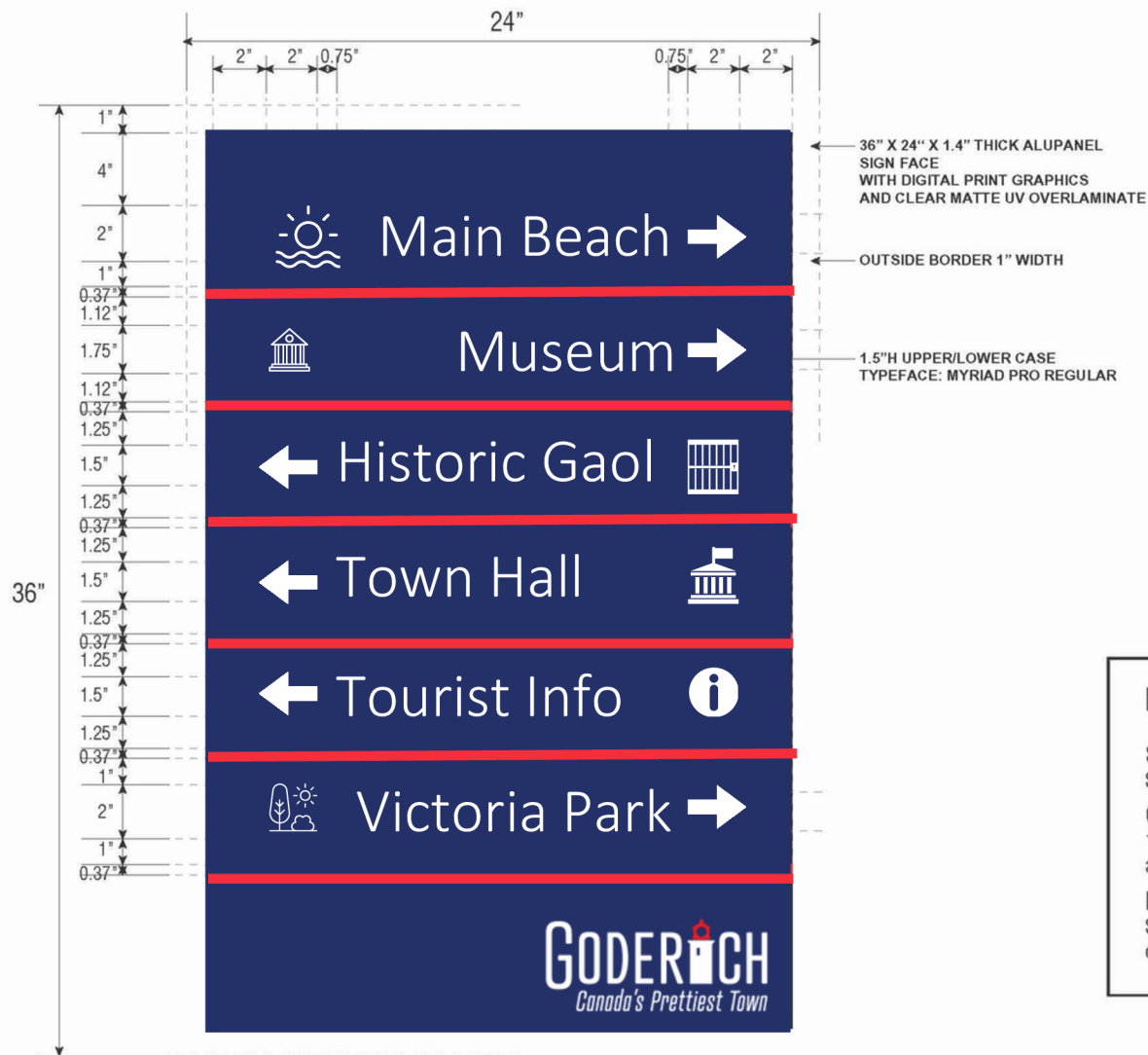


Existing Self Watering Planters

# **APPENDIX C WAYFINDING**



# Directional Sign Panel Example



FRONT VIEW  
SCALE: 1:5

## NOTES:

### SIGN C

Supply a directional sign.

### GRAPHICS / SUBSTRATE

1/4" thick alupanel with digital print graphics and clear matte UV overlaminate.

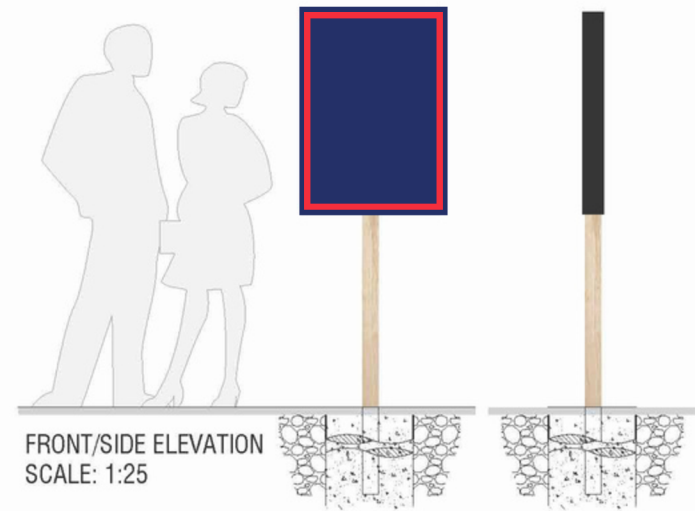
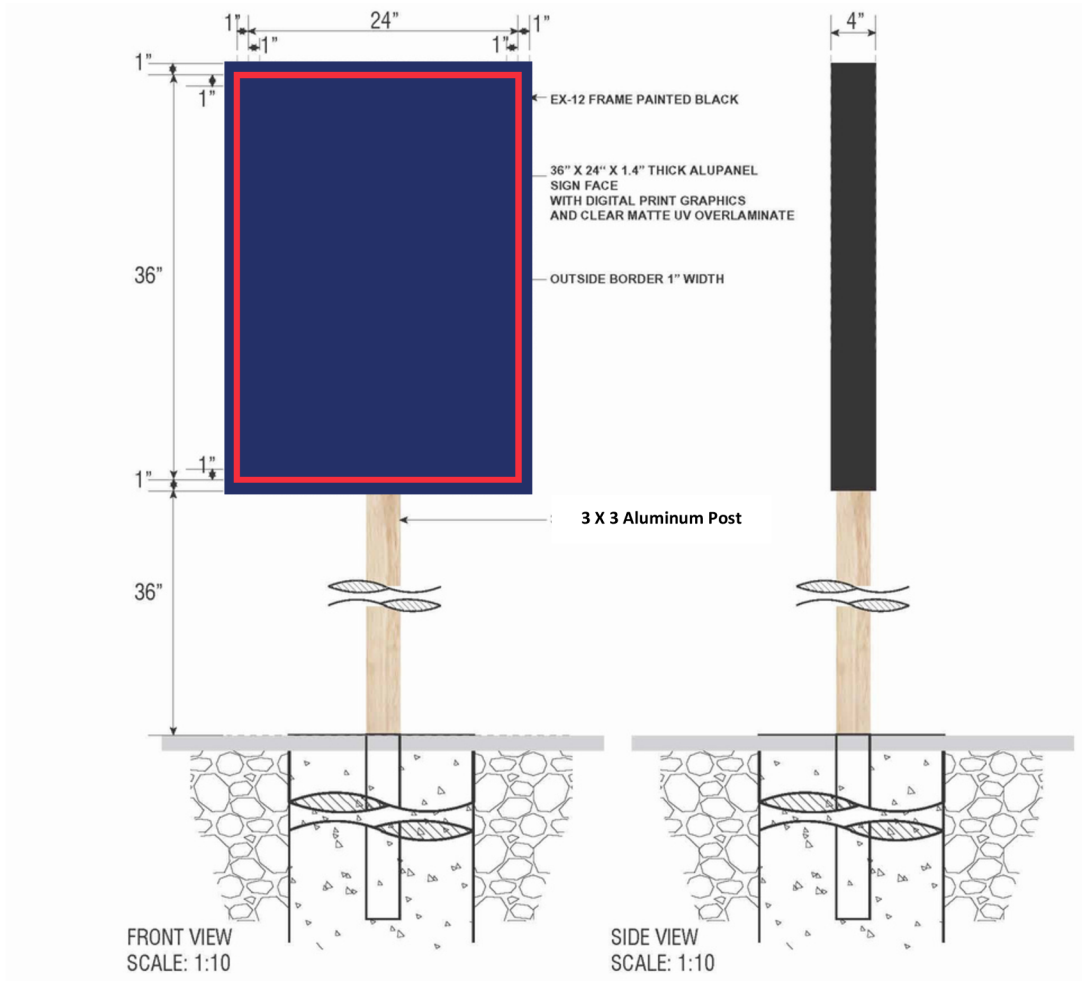
### INSTALLATION METHOD

Sign panel installed into aluminum frame directional sign backdrop.

## COLOUR

- Red PMS 185 coated
- Blue PMS 280 coated

# Directional Sign Panel Full Sign Example



## NOTES:

### SIGN C

Supply a directional sign.

### GRAPHICS / SUBSTRATE

1/4" thick alupanel with digital print graphics and clear matte UV overlaminate.

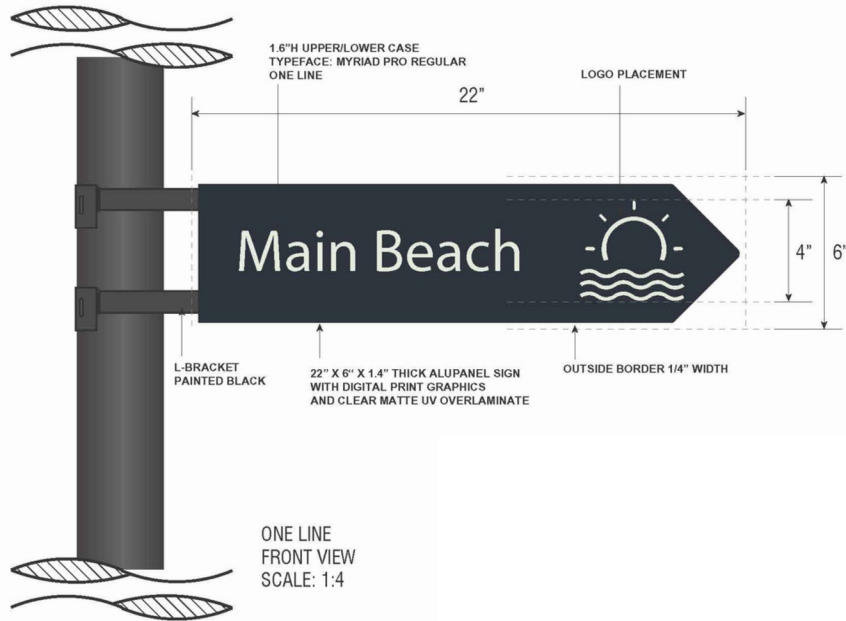
### INSTALLATION METHOD

Sign panel installed into aluminum frame directional sign backdrop.

## COLOUR

- Red PMS 185 coated
- Blue PMS 280 coated

# Road Signage

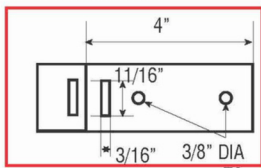


TWO LINE  
FRONT VIEW  
SCALE: 1:4



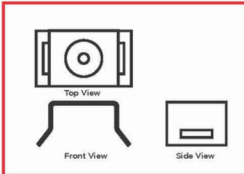
Regular Street Sign

L-BRACKET DETAIL



TO  
ACCOMMODATE  
9/16" SCREW,  
(2) WASHERS, AND NUT

FLARE LEG BRACKET DETAIL



## NOTES:

### SIGN G

Supply and Install thirty (30) directional signs.

### GRAPHICS / SUBSTRATE

1/4" thick alupanel with digital print graphics and clear matte UV overlamine.

### INSTALLATION METHOD

Sign panel mounted to a post.

### COLOR

- Red PMS 185 coated
- C:91 M:77 Y:54 K:67
- Blue PMS 280 coated